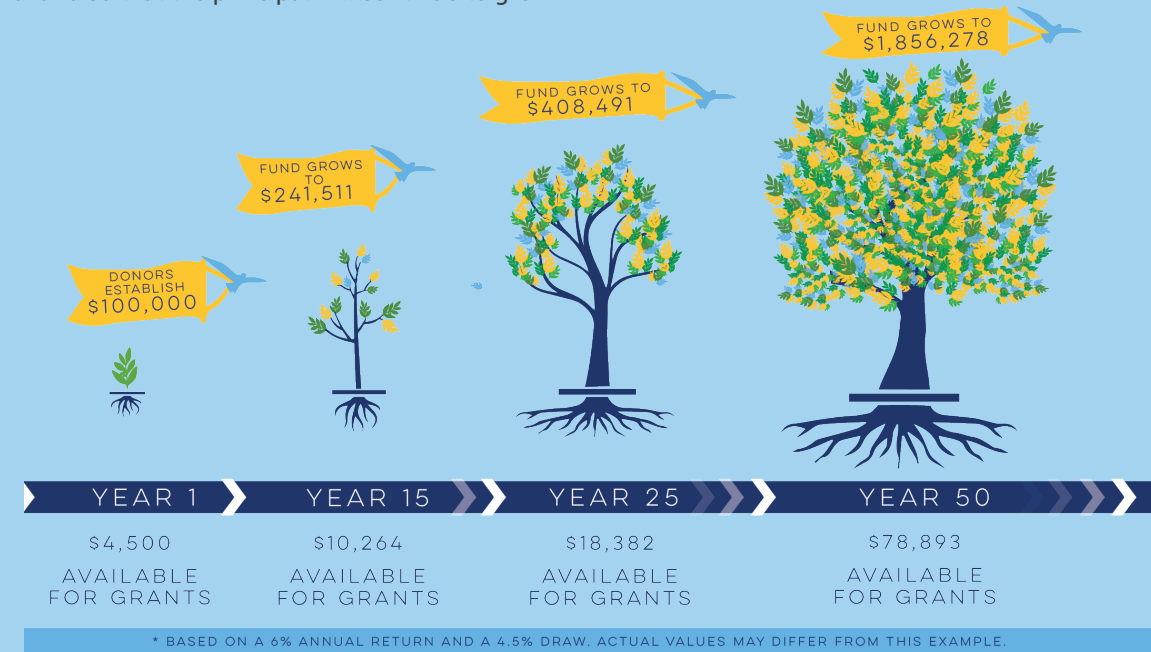


The SCH Endowment

The SCH endowment consists of more than 100 named endowed funds that support a wide range of donor interests that contribute to making our school so extraordinary. These include financial aid for deserving students, professional development for faculty, and support for specific academic, athletic, entrepreneurial, and extracurricular programs. The endowment is currently valued at more than \$40 million and is managed closely by the SCH Board of Trustees and hired investment professionals. Each year, a portion of the income from the endowment is used to fund its designated purposes; the rest is directed back into the fund so that the principal will continue to grow.

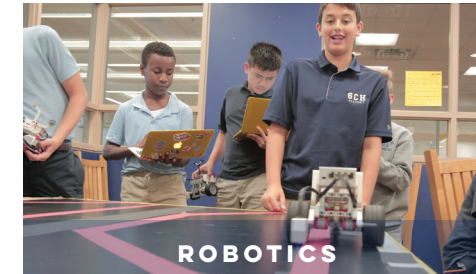
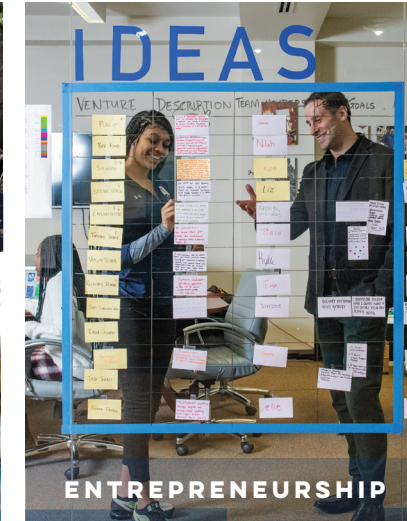


How Can I Support the Endowment?

- Named endowed funds may be established with a gift of \$50,000 or more and can be designated as unrestricted or restricted, with funds dedicated to a particular area of interest.
- Multiple donors may create a joint fund reflecting their shared interest.
- Donations of any size can also be made directly to an established endowed fund.

Please contact **Jenny McHugh** '84, P'15, P'19, Director of Development, at jmchugh@sch.org / 215-247-7161 or **Kristin Norton** P'20, P'22, Associate Director of Development, at knorton@sch.org / 215-261-2881 to discuss a gift to the endowment.

[SCH.ORG/OURFUTURE](https://sch.org/ourfuture)



FOUNDATIONS FOR OUR FUTURE:

ENDOW
the
Extraordinary

CAMPAIGN TO PAY IT
FORWARD

The Importance of a Vibrant Endowment

Springside Chestnut Hill Academy is an extraordinary school. Our single-sex Pre-K through 8th grade curriculum prepares students for an exciting and academically robust coed Upper School experience. Our students are learning from outstanding and caring teachers while enjoying unique opportunities to explore a wide array of interest areas and delve into budding passions. From internationally recognized robotics and entrepreneurial curricula to award-winning arts and athletics programs, SCH students benefit from excellence in every dimension.

To ensure that support continues for our students now and into the future, we are launching a campaign to grow our endowment. Endowed funds are a permanent source of support comprising gifts and bequests that help to underwrite the cost of SCH's extraordinary programs.

Giving to the SCH endowment has, and will always be, an investment in the school's permanence as well as a vehicle for ensuring that your priorities will be funded well into the future.

Our endowment is the financial pillar that ensures continuity of vision and quality during fluctuations in the economy. It helps ensure that SCH not only achieves its goals of becoming an inclusive, innovative educational force in the region, but also protects its legacy for future generations who will make a lasting impact in the world.

Giving to the SCH endowment establishes *your* legacy while strengthening *ours*.

LIVING LEGACY



The Springside School and Chestnut Hill Academy Classes of 1969 Peter G. Randall '69 Engineering and Robotics Chair in Memory of Lillian Koltnow

The continued extraordinary achievements of SCH Academy's Upper School robotics team, a five-time FIRST World Championships top-10 finisher and 2019 World Champion, is made possible by many donors, including the fund recently established by the Springside and CHA classes of 1969. The fund honors the classes' 50th reunion, former Springside physics teacher and STEM pioneer Lillian Koltnow, and Peter G. Randall '69, chair of the SCH Engineering and Robotics Department for his work in creating a schoolwide engineering and robotics curriculum that is one of the few of its kind in the country. This extraordinary fund ensures the continued development and success of our engineering and robotics program by supporting faculty salaries and professional development.

Our Gifts in Action



Jordie Maine, center, with family (l to r): Debbie, Emery '06, Libbie '12, and Jack '11.

SCH ACADEMY ALUMNI AND ALUMNAE SCHOLARSHIP FUND

This fund was established in memory of Charlotte Humphrey Landreth '29, Charles H. Landreth '29, Marilyn Clapham Parke '59, and Caterina C. Zara, former head of Miss Zara's School, which merged into Springside School. This scholarship fund provides tuition aid based on financial need for daughters, sons, granddaughters, and grandsons of SCH alumnae and alumni and its predecessor schools.

"I believe in the mission and the culture of SCH. I give so the school can continue to enrich students' lives through classes and extracurricular activities that are designed to build the next leaders of our local and world communities. I give to add to the sustainability of the institution's heritage and its future as a leading educational facility in the Philadelphia area. I give because I am still connected to the school that prepared me for the wonderful opportunities that life has presented to me."

~ Chas Landreth '66

JORDIE MAINE '79 SCHOLARSHIP FUND

Established in 2016 by the family and friends of Jordie Maine '79, this endowed fund honors his spirit. Jordie embodied the CHA jersey stripes of courage, honesty, integrity, loyalty, and sportsmanship. This scholarship will be awarded to students who demonstrate his zeal for life.

"We wanted to permanently connect Dad and ourselves to the school in a meaningful way. CHA and Springside, and now Springside Chestnut Hill Academy, were such a huge part of my Dad, and he was such a huge part of the school community."

~ Emery Maine Greenwood '06



L to r: Charles B. Landreth '66, Babbie Landreth Rogers '62, and Peter M. Landreth '68.



Eydie Miller-Ellis and others in the Class of 1977 continue to fundraise and support the Neighborhood Scholarship Fund.

NEIGHBORHOOD SCHOLARSHIP FUND

Established in 1989 by three alumnae from the Springside Class of 1977—Wanda Stewart, Ellen Nalle Hass, and Amy Banse—this fund was created to encourage the school community to reach out and be a force for change, to build bridges across neighborhoods, and to bring students from different backgrounds together at Springside School. A new neighborhood scholar is selected each year, and the fund currently supports scholarships for girls in grades 7-12.

"I support the Neighborhood Scholarship Fund because it allows a student who might not otherwise have the opportunity to both be enriched by and enrich the Springside community. Diversity of backgrounds and ideas benefits everyone, improves our ability to understand different perspectives, and makes meaningful contributions to the world at large. I'm glad my classmates had the vision to establish this scholarship to support talented young women across Philadelphia."

~ Eydie Miller-Ellis '77

JOHANNA LOUISE SIGMUND '94 SCHOLARSHIP FUND

Established by members of Johanna's class and her family after her death in the September 11 World Trade Center attack, this scholarship honors Johanna's memory. It is awarded to a student with demonstrated need who exemplifies the gifts of spirit, enthusiasm, athletic leadership, and compassion for others.

"I am proud that Johanna was my lifelong friend. She was an extraordinary person who exemplified the ideals of a proud Springside girl. Whether in the classroom, on the athletic field, or at an impromptu dance party with her friends, we were all inspired by her infectious smile and winning way. By establishing a scholarship in her name, we aim to perpetuate her legacy of faith, courage, enthusiasm, kindness, determination, family, friendship, and community. This scholarship allows us to continue to link Johanna's name to the school she dearly loved."

~ Brendan Flatow '94



Members of the Class of 1994 at the Sigmund Scholarship fundraiser with speaker Cokie Roberts (l to r): Alexandra Beatty Morris, Kimberly Ongaro, and Christina Romano.